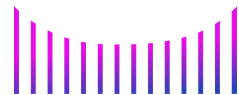




Precision Skin Marking
and Labeling Systems

Product Catalogue



ANDAU Medical

www.andaumedical.com

1-844-ANDAU88

sales@andaumedical.com



About Andau Medical

Andau is a Medical and Dental device company focused on providing the market with quality technologies that improve patient outcomes and enhance clinical experience in delivering exceptional patient care.

Bridging the gap between innovation and your clinical needs



About Suremark

Suremark focuses intensely on creating new precision skin marking systems that not only address the needs of technologists and doctors, but also provide a few moments of levity from the stress of medical procedures.



New Suremark® Products



MRI Liquimark: Our Liquimark MRI markers are NON-METALLIC and precision designed to the specific needs of MRI technologists and associated medical professionals.



Vision Line Kids: Give kids a choice when they feel like they don't have one with these fun, lighthearted precision skin markers. Puppies, kittens, pandas, and more for kids to choose their favorite!



Theramark: Designed specifically for use on radiation therapy immobilization masks, the Suremark® Theramark is a precision label that allows technologists to accurately mark specific points for radiation treatment.



Scaneez® Cone Beam Markers: Stop wasting time and money duplicating dentures with radiopaque acrylics, metal bb's, gutta percha, etc. Scaneez® markers are designed to save time and money!



Tomomark: Designed specifically for 3-D Tomosynthesis scans and diagnosis. They provide clear and accurate visualizations with the least potential for artifacts compared to other skin markers.



Suremark® is proud to support Ready for Recovery Cancer Treatment Planners and their efforts to bring positive energy and motivation to the cancer recovery process. These fun and inspiring “Moments That Matter” labels are intended to add a splash of color and celebration to the challenges of cancer treatment. While our product line focuses on diagnostics and treatment, it is a blessing to also help celebrate the milestones towards recovery that turn cancer patients into cancer survivors. More information at www.cancerplanners.com.



LiquiMark

Finally, a line of fiducial markers for MRI that visually promote healing, while keeping your budget in line. LiquiMark markers are NON-METALLIC, LATEX-FREE, and perform consistently and accurately in a variety of applications.

LM-1 - 8mm round - for small field of view areas.

LM-2 - 15mm tube - for extremities, soft tissue, and breast MRI.

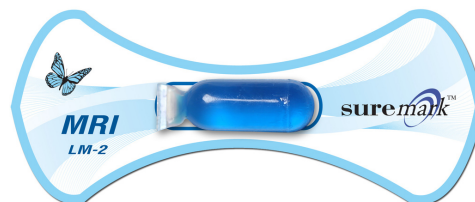
LM-3 - 30mm tube - for thoracic spines and larger areas of interest.

LM-4 - 10mm square liqui-pouch - for orthopedic imaging and pediatric cases. LM-5 - 10mm x 24mm liqui-pouch - for extremities, soft tissue and breast MRI. LM-6 - 10mm x 38mm liqui-pouch - for thoracic spines and larger areas of interest.

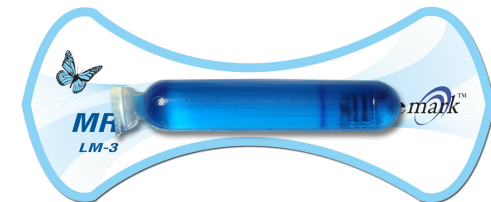
Packaged with 40 markers per box.



LM-1



LM-2



LM-3



LM-4



LM-5



LM-6



TomoMark

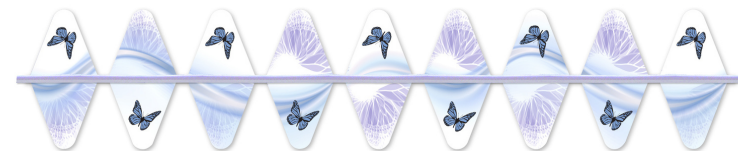
Suremark® Tomomarks™ are semi-lucent markers specifically formulated for 3-D Breast Tomosynthesis scans and diagnosis. They provide clear and accurate visualizations with the least potential for artifact compared to other skin markers. These specially formulated NON-METALLIC markers perform consistently and accurately in a variety of applications.

- TOMO-1 - Nipple marker
- TOMO-2 - Scar marker
- TOMO-3 - Mole marker
- TOMO-4 - Mass marker
- TOMO-5 - Pain marker

Packaged with 110 markers per box
Tomo-2 packaged with 336cm per box



TOMO-1
Nipple Marker



TOMO-2
Scar Marker



TOMO-3
Mole Marker



TOMO-4
Mass Marker



TOMO-5
Pain Marker

Vision Line Kids

It's hard enough for kids going through a difficult treatment plan, when they feel like they don't have a choice. Imaging procedures can be a scary experience for them, so having something lighthearted to think about can be the key to creating a positive experience for everyone involved. Vision Line™ Kids NON-METALLIC general use precision skin markers are LATEX-FREE, and come in six different cute and playful designs, allowing children to choose their favorite character.

Available in 2.5mm ball size.

Packaged with 110 markers per box.



VK-25A



VK-25B



VK-25C



VK-25D



VK-25E



VK-25F



V-20



V-25



Visionmark CT

The Visionmark CT is the next generation in general use skin markers. These specially formulated NON-METALLIC markers perform consistently and accurately in a variety of applications. Easy Peel Tabs.

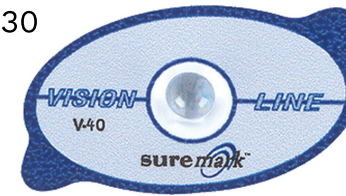
Available in 2.0mm and 2.5mm ball sizes.
Packaged with 110 markers per box.



V-30



V-50

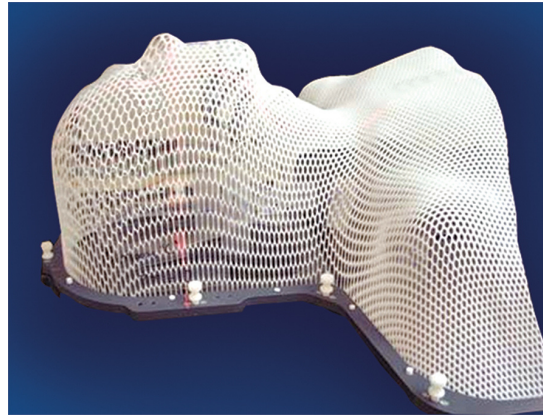
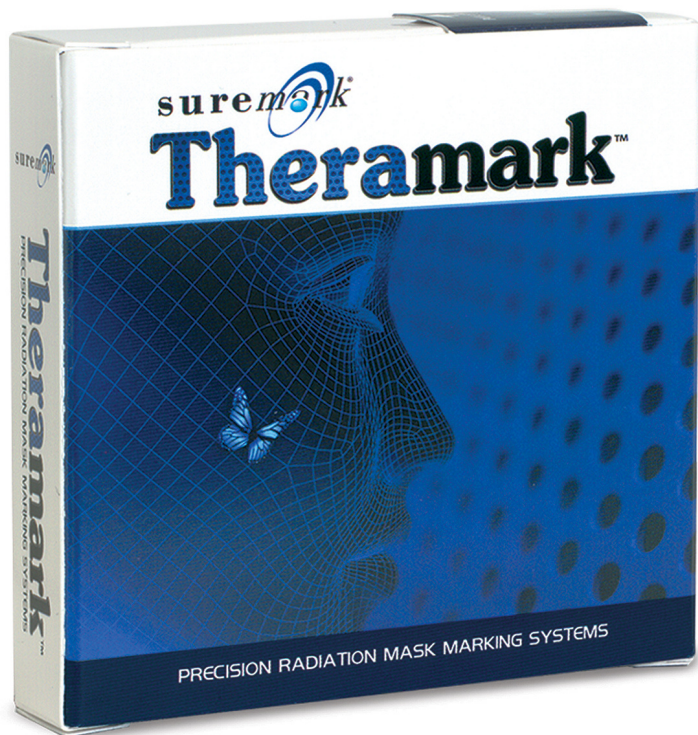


V-40

Visionmark CT Plus

These specially formulated NON-METALLIC markers reduce read time on CT scans with virtually no artifact. These sizes and ball densities are perfect for all CT skin marking applications. Easy Peel Tabs.

Available in 3.0mm, 4.0mm and 5.0mm ball sizes.
Packaged with 50 markers per box.



TM-25

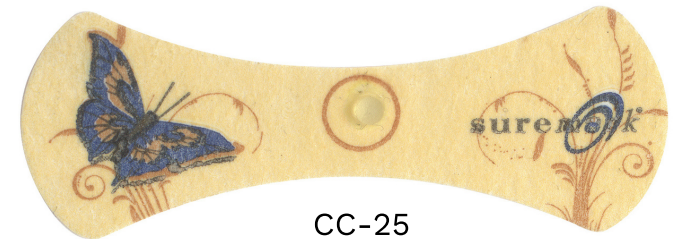
NEW Theramark™

Theramark markers stay securely where you put them throughout the entire treatment process. They are repositionable during the initial set up, giving you time to get the markers in just the right spot. The adhesive bonds stronger as time goes on. Theramarks adhere directly to immobilization masks without having to use tape. Only for use on immobilization masks. Not medical grade adhesive. Adhesive made with natural rubber latex.

Packaged with 110 markers per box.



CC-15

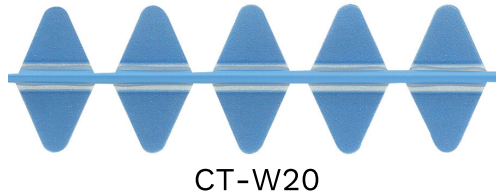
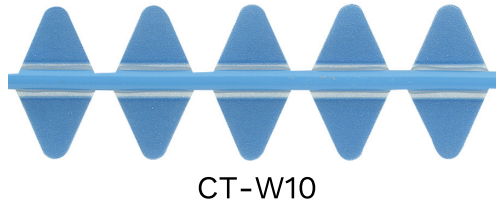
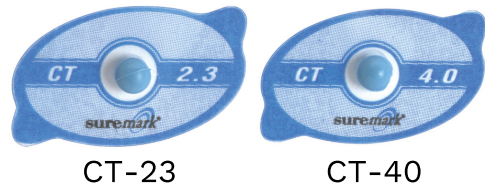


CC-25

ComfortMark™ **D** great for DIGITAL

After years of feedback from industry professionals and patients, the new ComfortMark™ labels have been developed to be the most conformable and comfortable skin markers ever. The flexible, stretchable material, easy-peel tab and adhesive-free center is not only comfortable on patient's skin, but the beautiful artwork is designed to help ease the stress of examinations.

Available in 1.5mm lead, or 2.5mm non-metallic ball sizes.
Packaged with 110 markers per box.



CTMARK™ and CTLINE™

The CT Mark and CT Line have been created specifically for CT imaging. This specially formulated NON-METALLIC material is the result of years of research and development, resulting in a virtually artifact-free opaque marker that is perfect for nearly all CT marking applications.

CT-Mark available in 2.3mm and 4.0mm ball sizes.

CT-23 Packaged with 110 markers per box.

CT-40 Packaged with 50 markers per box.

CT-W10 – 1.0mm line – packaged with 300 cm per box.

CT-W20 – 2.0mm line – packaged with 300 cm per box.



Suremark® CT-O

Like the rest of our CT products, the CT-O is opaque and artifact-free, making it perfect for indicating and marking details in CT Scans.

Packaged with 50 markers per box.



Suremark® CT-CR3

Created by request, the CT-CR3 is another precision skin marking tool perfectly suited for CT applications.

Packaged with 50 markers per box.



In lieu of permanent or temporary tattoos, apply PortalMark™ labels to delineate radiation treatment areas. Their premium medical grade adhesive is hypo-allergenic and latex-free, resulting in less irritation for the patient. PortalMark™ labels are constructed of waterproof, yet breathable material for maximum performance and comfort for up to two weeks.

Our unique Suregrip applicator discs ensure easy and accurate placement of PortalMark™ labels without contaminating the adhesive.

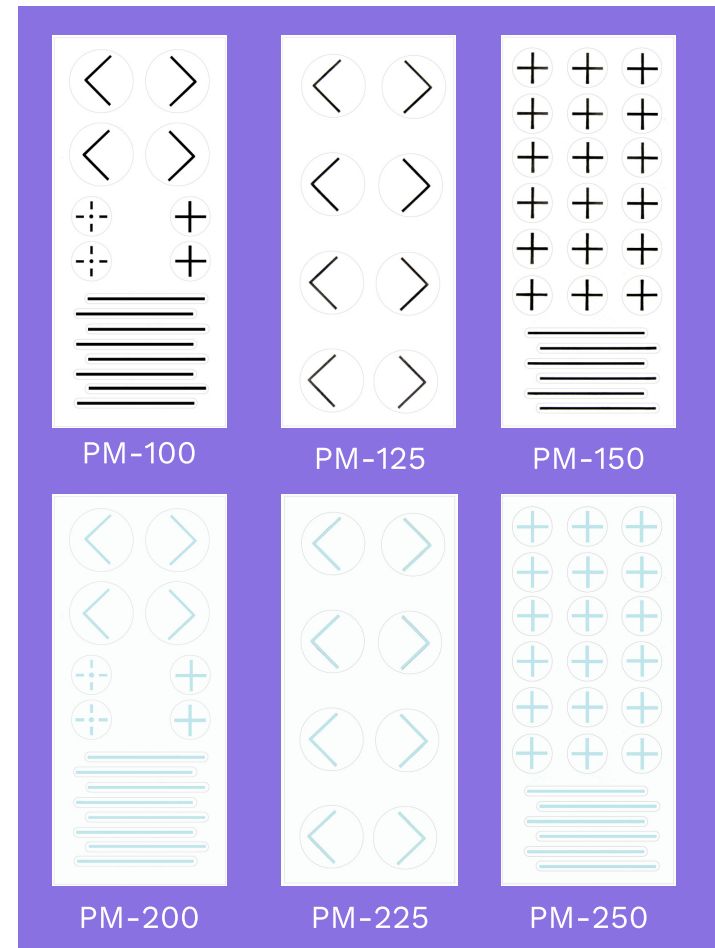
The 200 Series is designed for use with darker skin surfaces, giving technologists a complete line of options.

PM-100 and 200 - Each sheet includes: 8 field lines, 4 corners, 2 set up points, and 2 isocenters.

PM-125 and 225 - Each sheet includes: 8 corners.

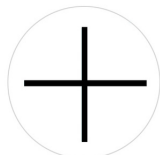
PM-150 and 250 - Each sheet includes: 18 isocenters, and 6 field lines.

All PortalMark™ labels are packaged with 50 sheets per box.





PM-300
(PM-400)*



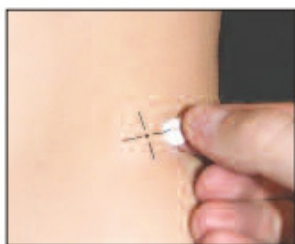
PM-325
(PM-425)*



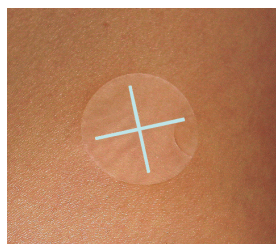
PM-350
(PM-450)*



PM-375
(PM-475)*



PM-300 Shown



PM-375 Shown

PortalMark

The newest members of the PortalMark label family offer additional options for delineating radiation treatment areas. Their premium medical grade adhesive is hypo-allergenic and latex-free, resulting in less irritation for the patient. Constructed of waterproof, yet breathable material for maximum performance and comfort, PortalMarks hold strong for up to two weeks. Our unique Suregrip applicator discs ensure easy and accurate placement without contaminating the adhesive.

Packaged with 110 labels per box.

**PM-400 Series uses an alternate material and adhesion for more humid environments and particular skin surfaces.*



SL-30



SL-40



SL-50

Powermark

This design maintains all of the advantages of our regular Suremark® labels, with larger lead ball sizes for visibility in radiation therapy.

Available in 3.0mm, 4.0mm, and 5.0mm ball sizes.

Packaged with 50 markers per box.



SL-15RT



SL-20RT



SL-25RT



SL-15T



SL-20T



SL-25T

Suremark® Relief Tabs

Mammograms are uncomfortable enough for patients without the painful removal of nipple markers. With this in mind, give your patients some relief with Suremark®'s Relief Tabs™. The unique adhesive-free center won't stick to sensitive areas of the skin.

Available in 1.5mm, 2.0mm and 2.5mm ball sizes.
Packaged with 110 markers per box.

Suremark® Tabs

This design maintains all of the advantages of our regular Suremark® labels, with the added benefit of a “tabbed” feature. This enables natural and conforming placement on more prominent nipples or where more skin contact is preferred.

Available in 1.5mm, 2.0mm and 2.5mm ball sizes.
Packaged with 110 markers per box.



BL-15



BL-20

Suremark® BeautyLine Marks

D great for
DIGITAL

This new upgraded design, maintains all of the technical advantages of our regular Suremark® labels including our famous “tab” feature, but is also produced with a soothing artistic flair to help take the edge off of stressful examinations for patients.

Available in 1.5mm, 2.0mm ball sizes.
Packaged with 110 markers per box.



SL-10



SL-12



SL-15



SL-18



SL-20



SL-25

Suremark®

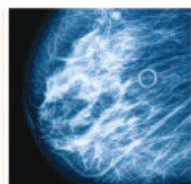
D great for
DIGITAL

The most common style for general use. Suremark® 1.0mm, 1.2mm, 1.5mm, 1.8mm. 2.0mm and 2.5mm labels are perfect for distinguishing between a nipple shadow and lesion, thereby reducing costly repeat examinations.

Available in 1.0mm, 1.2mm, 1.5mm, 1.8mm, 2.0mm, and 2.5mm ball sizes.
Packaged with 110 markers per box.



SL-MO



Our BEST selling mole marker. SL-MO's semi-lucent design allows tissue directly under the marker to be clearly seen.



SL-MOT - Tabbed Mole Marker



SL-SQ



SL-CR2



SL-T1



SL-A2

Suremark® Clearmarks



The metal-free semi-lucent markers are made of materials specially designed to clearly mark moles, entry points, and mass locations, yet light enough to enable clear visibility of all underlying details.

Available as SL-MO, SL-MOT, SL-SQ, SL-CR2, SL-T1, SL-A2. Packaged with 110 markers per box.



SL-M2

SL-M3

Suremark® Mole Markers



These markers are uniquely designed to locate raised moles and other skin nevi without overshadowing micro-calcifications. The radiolucent ring, when placed around a protuberance, prevents flattening due to compression.

Available with 2 ref. points (SL-M2) or 3 ref. points (SL-M3). Packaged with 50 markers per box. US Patent Number 6,269,148



BL-MO

Suremark® BeautyLine Mark



With the same precision design as Clearmarks™, this metal-free semi-lucent marker also has beautiful artwork to help relieve the stress of exams.

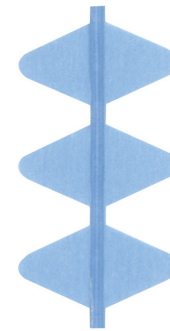
Packaged with 110 markers per box.



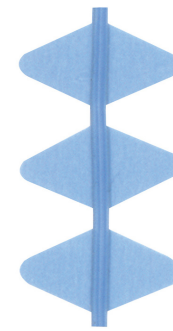
CLEARLINE™ *Semi-lucent Scar Markers*

Clearline low-density, non-metallic, semi-lucent scar markers provide distinct outlining of scars and other areas of concern.

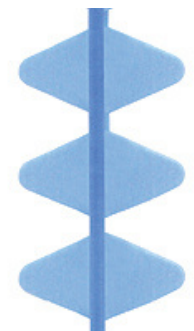
- CL-8 – 0.8mm semi-lucent line – packaged with 336 cm per box.
- CL-10 – 1.0mm semi-lucent line – packaged with 336 cm per box.
- CL-15 – 1.5mm semi-lucent line – packaged with 320 cm per box.
- CL-20 – 2.0mm semi-lucent line – packaged with 320 cm per box.
- CL-25 – 2.5mm semi-lucent line – packaged with 203 cm per box.
- CL-30 – 3.0mm semi-lucent line – packaged with 165 cm per box.



CL-8



CL-10



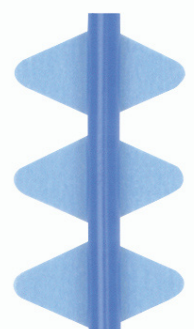
CL-15



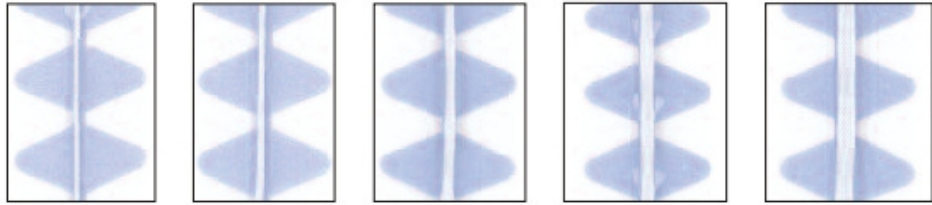
CL-20



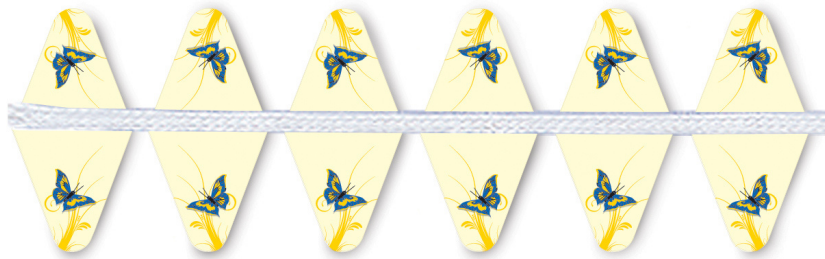
CL-25



CL-30



SL-W3 (.3mm wire) SL-W4 (.4mm wire) SL-W8 (.8mm wire) SL-W12 (1.2mm wire) SL-W15 (1.5mm wire)



BL-W4 (.4mm wire)

Suremark® Wire

This valuable tool is used for marking scar tissue, outlining palpable nodules, and opaque outlining of field lines and match lines.

Available in .3mm, and .4mm.
Packaged with 336cm per box.

Available .8mm, 1.2mm and 1.5mm wire sizes.
Packaged with 336cm per box.

Suremark® BeautyLine Wire

BeautyLine is the next generation of precision skin marking tools, providing precision accuracy for technologists and beautiful butterfly art for the patients, helping to ease their stress.

Available in .4mm.
Packaged with 336cm per box.



Scaneez™

“Stick ‘n Scan” Cone Beam Markers. With Scaneez precision denture marking systems, there is no longer a need to duplicate dentures. Scaneez markers save on lab bills and chair time, allowing dentists to create the treatment plan and start the case during the consultation visit.

With the Scaneez “Stick ‘n Scan” technology, you save time and money. Easy on, easy off.

Packaged with 110 markers per box
All 7 boxes together at a significant discount.
Kit includes two of each label.

DM-1 Upper Central	DM-2 Upper Lateral	DM-3 Upper Cuspid	DM-4 Universal Bicuspid	DM-5 Universal Molar	DM-6 Lower Cuspid	DM-7 Lower Incisor



DentalMark Marking System

Designed specifically for the dental industry. For a variety of uses in facial marking, denture marking, and guided surgery.

SF-10 is ideal for use with Conventional Cephalometrics.

VF-10 is ideal for Cone Beam CT.

VF-20 is ideal for Denture Cone Beam CT.

CF-23 is a larger ball diameter while eliminating artifact in Cone Beam CT Scans.

Packaged with 110 markers per box.

NEW DM-8

DM-8 DentalMarks improve CBCT flange and denture base scanning. The DM-8 standardized size (2mm) offers real-time precision data for more accurate decision making. The DM-8 is flat, so it can be used on the underside of dentures.

Packaged with 110 markers per box.

Non-sterile
for external use



SF-10



VF-10



Actual size: 6.4mm



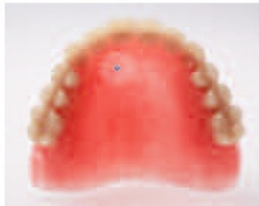
VF-20



CF-23



DM-28



SL-Arrow



SL-Arrow being used to mark location of pain in patient

Suremark® Arrow

Easy-peel tabs with a 1mm x 8mm lead arrow on transparent, disposable label. The best tool to use when a directional marker is preferred. Especially useful to indicate foreign bodies, points of entry, ribs, and for use in radiation therapy.

Packaged with 100 markers per box



SL-CR1

Suremark® Cross Reference

The SL-CR1 is a 1/2" lead cross placed on a disposable tabbed label. Excellent for marking the central axis ray.

Packaged with 50 markers per box.



Suremark® Right and Left

These disposable “right” and “left” markers are useful in a variety of situations where a disposable marker applied to the cassette is preferred, such as portable procedures, and isolation cases. Each label contains a 1/2" (1.2cm) lead letter mounted on a 7/8" (2.23cm) x 1 7/8" (4.76cm) backing, with an easy-peel edge for convenient removal after the label is used.

This cassette marker is not latex-free.

Packaged with 100 markers per box.



SL-DT1

Double Sided Foam Tape

Ideal for fastening film markers to cassettes.

Packaged with 110 strips per box.



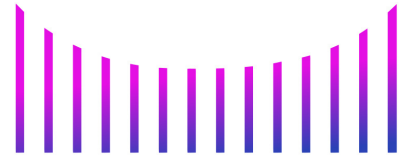
BH-5

Convenient Box Holder

Holds five standard boxes, or two R and L boxes.

Place on a desktop or mount to a wall or imaging machine.

Contact us for more
information or to order



ANDA U MEDICAL

1-844-ANDA U88

sales@andaumedical.com

www.andaumedical.com



suremark[®]